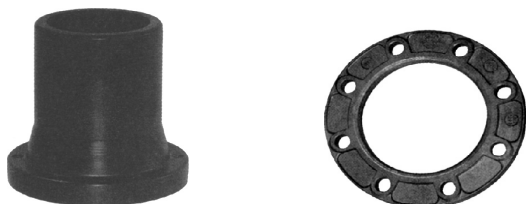
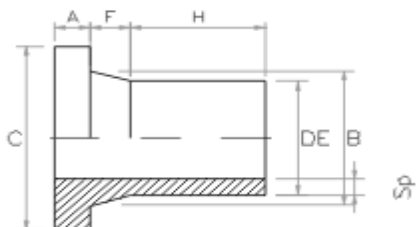


• ΚΟΛΛΑΡΟ ΦΛΑΝΤΖΑΣ , ΦΛΑΝΤΖΑ STEEL/GALVANIZED



Διαστάσεις fittings PE

→ ΚΟΛΛΑΡΟ ΦΛΑΝΤΖΑΣ

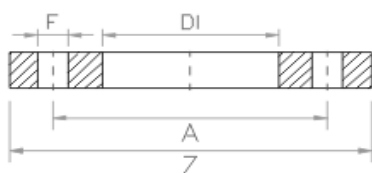


| DE (mm) | SDR | S | H (mm) | F (mm) | B (mm) | C (mm) | A (mm) |
|---------|-----|---|--------|--------|--------|--------|--------|
| 25 | 11 | 5 | 45 | 13 | 33 | 58 | 9 |
| 32 | 11 | 5 | 50 | 13 | 40 | 68 | 10 |
| 40 | 11 | 5 | 55 | 15 | 50 | 78 | 11 |
| 50 | 11 | 5 | 55 | 19 | 61 | 88 | 13 |
| 63 | 11 | 5 | 64 | 19 | 75 | 102 | 15 |
| 90 | 11 | 5 | 80 | 22 | 105 | 138 | 18 |
| 110 | 11 | 5 | 90 | 27 | 125 | 158 | 19 |
| 125 | 11 | 5 | 100 | 24 | 132 | 158 | 25 |
| 140 | 11 | 5 | 103 | 30 | 155 | 188 | 25 |
| 160 | 11 | 5 | 105 | 30 | 175 | 212 | 26 |
| 180 | 11 | 5 | 110 | 32 | 185 | 212 | 30 |
| 200 | 11 | 5 | 115 | 42 | 232 | 268 | 32 |
| 225 | 11 | 5 | 118 | 38 | 235 | 268 | 32 |
| 250 | 11 | 5 | 119 | 42 | 285 | 320 | 35 |
| 315 | 11 | 5 | 150 | 40 | 335 | 370 | 35 |

TECHNICAL REMARKS

| | |
|------------|--|
| Πρότυπα | EN 1555-1, EN 1555-3, EN 1555-5, EN 1555-7 |
| Πρώτη ύλη | “SOLVAY” ELTEX TUB 171 – PE80 = MRS8.0 |
| Λειτουργία | Injection moulding and mechanical working. |

→ ΓΩΝΙΑ 45°



| DE (mm) | SDR | S | A (mm) | Z (mm) | DI (mm) | F (mm) | Βίδα |
|---------|-----|---|--------|--------|---------|--------|------|
| 25 | 11 | 5 | 65 | 90 | 34 | 11 | M10 |
| 32 | 11 | 5 | 75 | 100 | 42 | 11 | M10 |
| 40 | 11 | 5 | 90 | 120 | 51 | 14 | M12 |
| 50 | 11 | 5 | 100 | 130 | 62 | 14 | M12 |
| 63 | 11 | 5 | 110 | 140 | 78 | 14 | M12 |
| 90 | 11 | 5 | 150 | 190 | 108 | 18 | M16 |
| 110 | 11 | 5 | 170 | 210 | 128 | 18 | M16 |
| 125 | 11 | 5 | 170 | 210 | 135 | 18 | M16 |
| 140 | 11 | 5 | 200 | 240 | 158 | 18 | M16 |
| 160 | 11 | 5 | 225 | 265 | 178 | 18 | M16 |
| 180 | 11 | 5 | 225 | 265 | 188 | 18 | M16 |
| 200 | 11 | 5 | 280 | 320 | 235 | 18 | M16 |
| 225 | 11 | 5 | 280 | 320 | 238 | 18 | M16 |
| 250 | 11 | 5 | 335 | 375 | 288 | 18 | M16 |
| 315 | 11 | 5 | 395 | 440 | 338 | 22 | M20 |